

Power Bushings, cont.

VTE has developed several connection devices, to pass current through barriers.



View inside the back cover for the Prop 65 Warning.

NEW



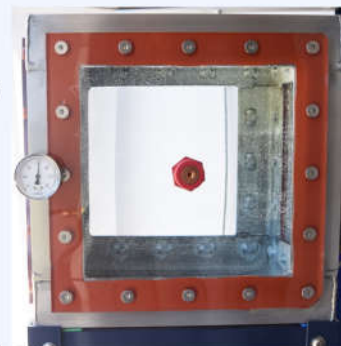
ICB085N02



Internal Thread Copper Core Bushing (ICB)

Our Internal Thread Copper Core Bushing has been developed for low profile installations. In addition, the ICB marks our first waterproof power bushing. Creative core design and silicone rubber gasket keep the device water and dust proof.

- Waterproof to IP67+
- Copper core provides high conductivity with low heat buildup
- Capacity: Duty Cycle: 80%
Nom: (350amp @ 12vdc)
Peak: (450amp @ 12vdc)
- Can be fitted to panels up to 3/8" (9.5mm)
- Bushing Material: Glass-Filled Nylon
- Corrosion resistant stainless steel hardware
- When used with terminal insulators, complies with industry standards
- Maximum Voltage: 48 vdc



PART NUMBER	THREAD	AMPERAGE		COLOR
		NOM	PEAK	
ICB085N02	8mm	350	450	Red
ICB085N14	8mm	350	450	Black

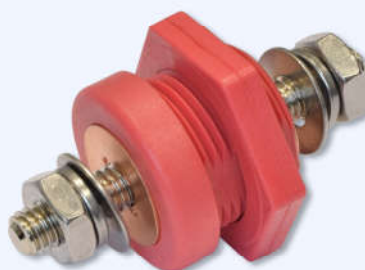
More sizes coming soon



Copper Core Power Bushing

Our Copper Core Power Bushing has been developed to be a simple and low cost way to pass current through a barrier. The copper 'core' passes current through the core, instead of through the steel post. The steel post is used to fasten the assembly, providing high torque capabilities.

- Low cost, fast install power bushing
- Capacity: Duty Cycle: 80%
Nom: 5.2kw (440amp @ 12vdc)
Peak: 6.6kw (550amp @ 12vdc)
- Can be fitted to panels up to 3/8" (9.5mm)
- Bushing Material: Glass-Filled Nylon
- Post Material: Ni Plated Steel
- Bushing can be fitted with 258 Series terminal insulator
- When used with terminal insulators, complies with industry standards
- Maximum Voltage: 48 vdc



CCB376N0NR02
(Red)

CCB376N0N14
(Black)



Original Red on Black
still available as
CCB376N0N02
and
CCB376M0N02

PART NUMBER	POST	AMPERAGE		COLOR
		NOM	PEAK	
CCB376N0NR02	3/8"	440	550	Red
CCB376N0N14	3/8"	440	550	Black
CCB506N02	1/2"	440	550	Red
CCB506N14	1/2"	440	550	Black
CCB376M0NR02	M10	360	450	Red
CCB376M0N14	M10	360	450	Black

Add 'W' to model number to indicate weatherproof model. Weatherproof model includes 358 Series sealing ring and 258 Series Terminal Insulator.

Also available in weatherproof model

