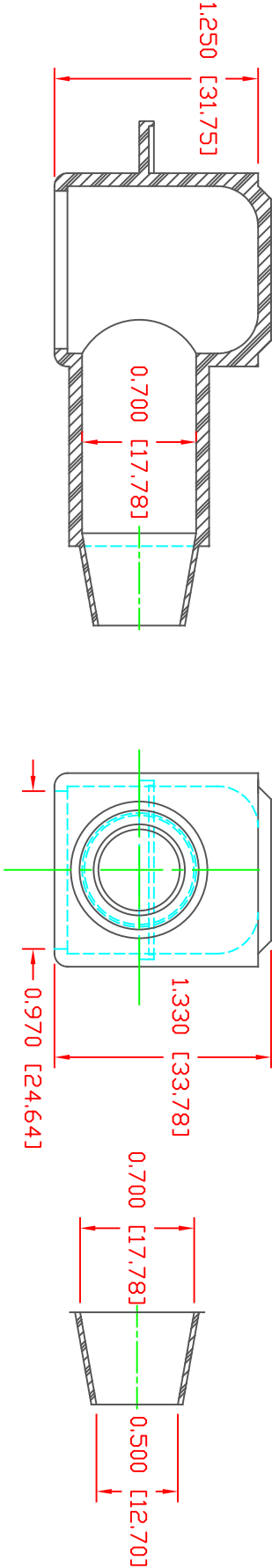


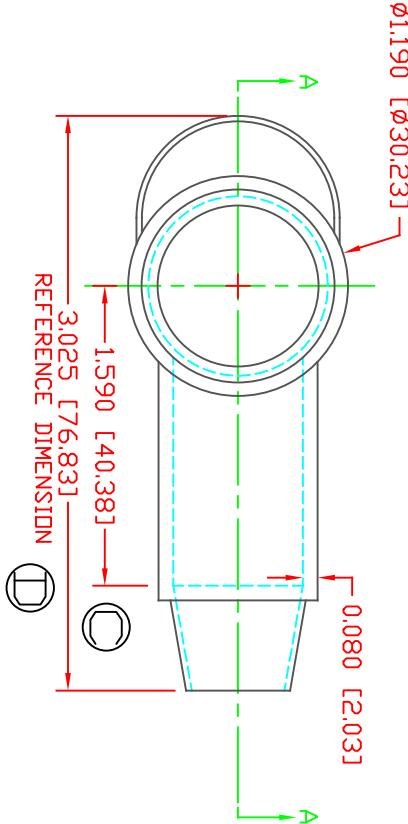
THE INFORMATION CONTAINED IN THIS DRAWING IS THE SOLE PROPERTY OF VTE INCORPORATED. ANY REPRODUCTION IN PART OR WHOLE WITHOUT THE WRITTEN PERMISSION OF VTE INCORPORATED IS PROHIBITED.VTE MAKES NO WARRANTY, EXPRESSED OR IMPLIED, AS TO THE SUITABILITY OF A PRODUCT FOR ANY INTENDED USE. THE CUSTOMER SHALL BEAR THE SOLE RESPONSIBILITY OF DETERMINING THE SUITABILITY OF ANY VTE PRODUCT FOR ITS END USE.

LTR.	REVISIONS	DATE	INT.
A	ADDED REFERENCE DIMENSION	02-25-16	RAS
B	UPDATED BLUE MATERIAL INFORMATION	08-01-22	RAS
C	1.590 [40.38] WAS 1.620 [41.15]	11-18-24	RAS
D	3.025 [76.83] WAS 3.107 [78.92]	11-18-24	RAS



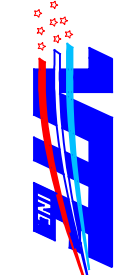
SECTION A-A  
TYP. WALL THICKNESS = .080" [2.0]  
SEAL ND. 3 SHOWN

SEAL THICKNESS = .030" [.8]  
ND. 3  
Cable Googes  
2 - 2/0



VTE PART NO: 1101650102  
MATERIAL: PVC  
VENDOR PART NO: 9812-65-RED 683  
SHORE DUREMETER: "A" 10 SEC. 65  
SPECIFIC GRAVITY: 1.34  
ULT. ELONGATION %: 400  
MELTING TEMP: 315-335 F [157-168 C]  
BRITTLE TEMP: -54 F [-48 C]  
Tensile Strength PSI: 1550 PSI  
Dielectric Strength, v./mil: 511  
U.L. Rating: V2

ALL DIMENSIONS GIVEN AS: In [mm]  
MOLDED PARTS: ±.030" [±0.8mm]  
HARDWARE ITEMS: ±.010" [±0.25mm]



VTE Incorporated  
5437 Robinson Road, P.O. Box 790  
Pellston, Michigan 49769  
Telephone: 1-800-527-9256, 231-539-8000  
FAX: 231-539-0914

REF:	DATE:	DRN BY:	JC	WEIGHT:
CUSTOMER DIMS	03-24-98	CHK'D BY:	JC	.033 LBS [15.1 g]
TITLE: TERMINAL INSULATOR CAP				
MATERIAL:	PVC	PART NO.		
COLOR: RED	DRG CLASS	REV D		
226N3V02				

DO NOT SCALE