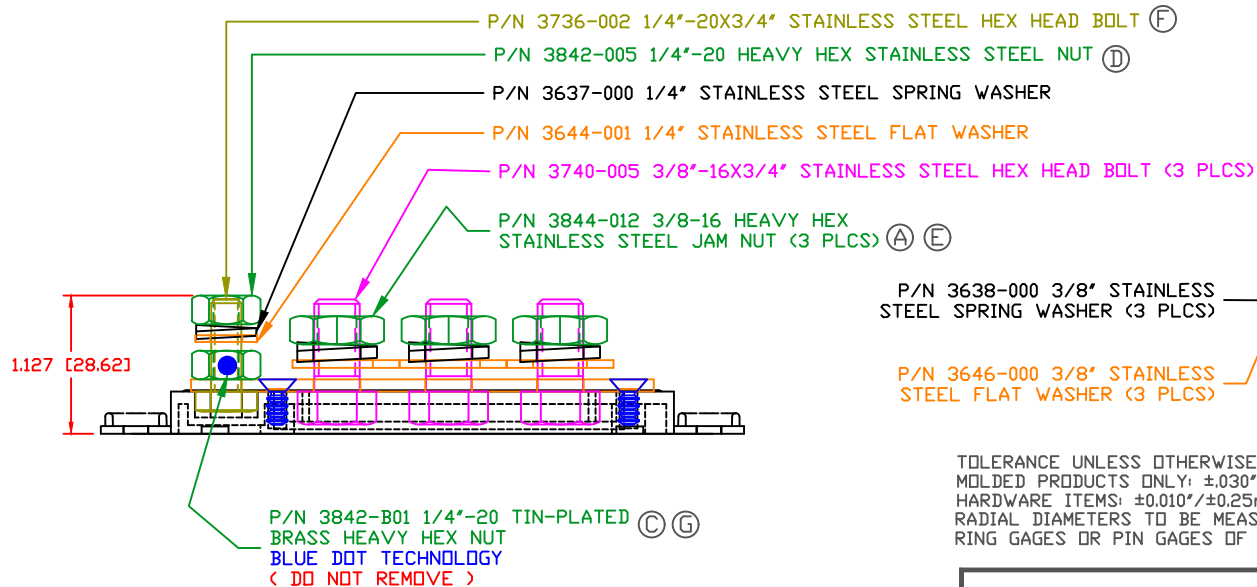
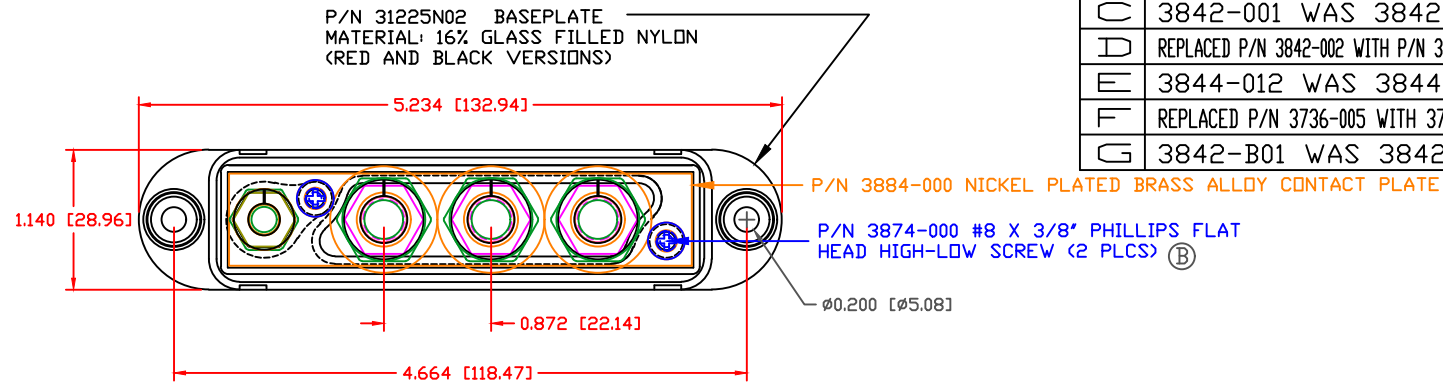


THE INFORMATION CONTAINED IN THIS DRAWING IS THE SOLE PROPERTY OF VTE INCORPORATED. ANY REPRODUCTION IN PART OR WHOLE WITHOUT THE WRITTEN PERMISSION OF VTE INCORPORATED IS PROHIBITED.

LTR.	REVISIONS	DATE	INT.
A	3844-003 WAS 3844	06-16-06	BRH
B	3874-000 WAS 3873-000	07-12-06	BRH
C	3842-001 WAS 3842-002	08-14-06	BRH
D	REPLACED P/N 3842-002 WITH P/N 3842-005	03-28-06	RAS
E	3844-012 WAS 3844-003	11-01-16	JMM
F	REPLACED P/N 3736-005 WITH 3736-002	2-14-17	RAS
G	3842-B01 WAS 3842-001	06-14-17	JMM



TOLERANCE UNLESS OTHERWISE SPECIFIED:
 MOLDED PRODUCTS ONLY: ±.030"/±0.8mm
 HARDWARE ITEMS: ±.010"/±0.25mm
 RADIAL DIAMETERS TO BE MEASURED OVER MANDRELS,
 RING GAGES OR PIN GAGES OF SUITABLE SIZE

INCLUDES P-16808110001 BLUE DOT MULTI LABEL, 1 PER CONTAINER
 MAXIMUM AMPERAGE: 210 AMPS @12VDC
 RECOMMENDED MAX FASTENER TORQUE: 3/8"-16 - 180 IN./LBS.
 1/4"-20 - 60 IN./LBS.
 (ANTI-SEIZE RECOMMENDED)
 BASE MATERIAL: GLASS-REINFORCED NYLON
 BASE MATERIAL U.L. RATING: 94 HB

VTE Incorporated

5437 Robinson Road, P.O. Box 790
 Pellston, Michigan 49769
 Telephone: 1-800-527-9256, 231-539-8000
 FAX: 231-539-0914

REF:	DATE: 01-20-06	DRN BY: BRH	WEIGHT:
CUSTOMER DIMS		CHK'D BY: BRH	
TITLE: 3/8" 4- POINT CONTACT PLATE			SCALE:
MATERIAL:		PART NO.	
COLOR: RED	DRG CLASS	REV G	7704N0N02