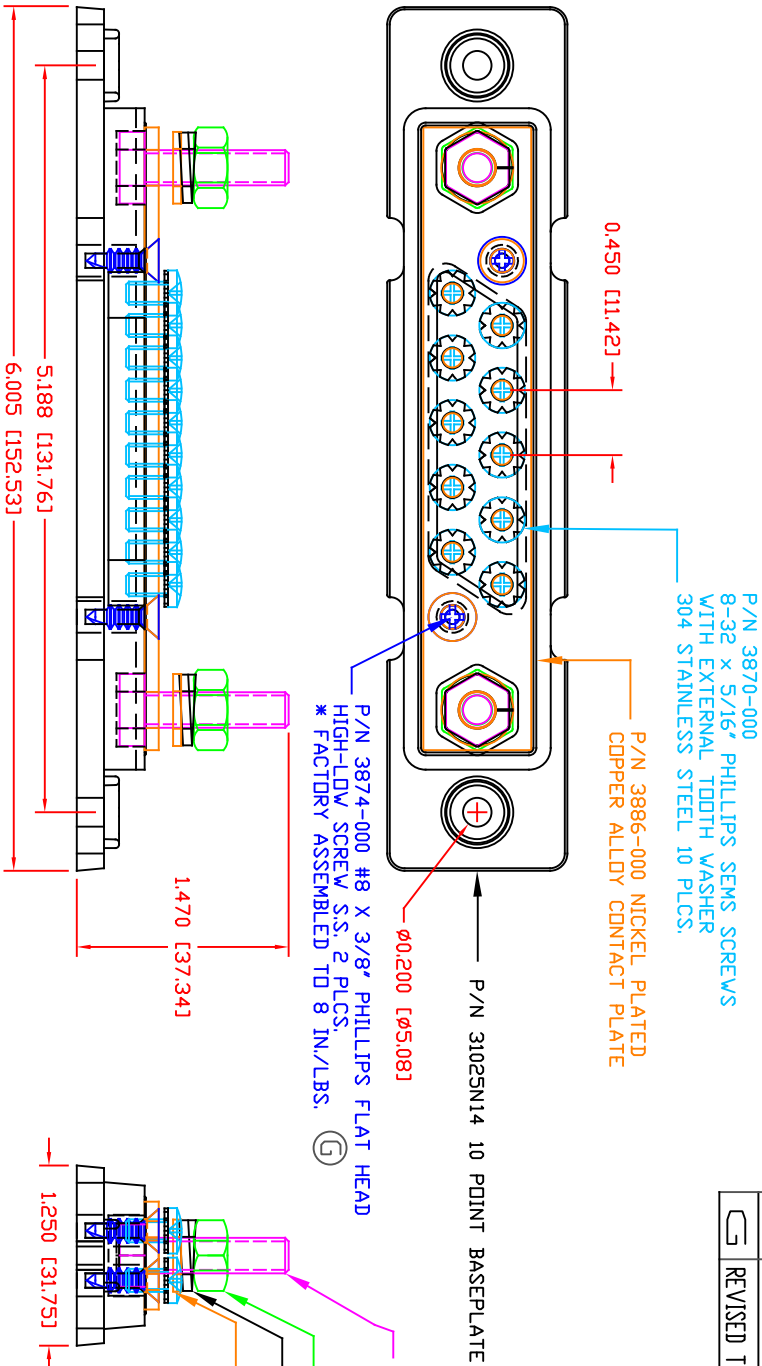


THE INFORMATION CONTAINED IN THIS DRAWING IS THE SOLE PROPERTY OF VTE INCORPORATED. ANY REPRODUCTION IN PART OR WHOLE WITHOUT THE WRITTEN PERMISSION OF VTE INCORPORATED IS PROHIBITED.VTE MAKES NO WARRANTY, EXPRESSED OR IMPLIED, AS TO THE SUITABILITY OF A PRODUCT FOR ANY INTENDED USE. THE CUSTOMER SHALL BEAR THE SOLE RESPONSIBILITY OF DETERMINING THE SUITABILITY OF ANY VTE PRODUCT FOR ITS END USE.

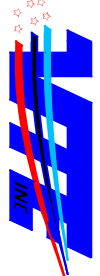
LTR.	REVISIONS	DATE	INT.
A	ADDED TORQUE SPECIFICATION	01-21-14	BRH
B	ADDED SUB-ASSEMBLY NOTE	02-23-15	BRH
C	REMOVED SUB-ASSEMBLY NOTE P/N 73886	02-04-16	RAS
D	REPLACED P/N 3842-002 WITH P/N 3842-005	03-29-16	RAS
E	UPDATED ELECTRICAL VALUES	01-03-17	RAS
F	ADDED FACTORY TORQUE SPEC TO 3874-000	5-23-24	RAS
G	REVISED TORQUE SPEC FROM 10 IN./LBS.	11-13-24	RAS



SCALE FACTOR : NONE
ALL DIMENSIONS GIVEN AS: In [mm]
TOLERANCES UNLESS OTHERWISE SPECIFIED :
MOLDED PARTS: ±0.30" [±0.8mm]
HARDWARE ITEMS: ±.010" [±0.25mm]

MATERIAL PART NO:
1111210514UL
MATERIAL:
GLASS FILLED NYLON
VENDOR PART NO:
HYLON N2015 HL BK
SPECIFIC GRAVITY:
1.23
MELTING TEMP:
515 F [268 C]
UL RATING:
UL 94 HB

#8 SCREWS FACTORY INSTALLED TO 15 IN.-LBS
MAXIMUM RECOMMENDED AMPERAGE: 150 A @12VDC (20A X 10 PLCS)
MAXIMUM RECOMMENDED VOLTAGE: 48VDC

 <div>VTE Incorporated 5437 Robinson Road, P.O. Box 790 Pellston, Michigan 49769 Telephone: 1-800-527-9256, 231-539-8000 FAX: 231-539-0914</div>			
REF:	DATE:	DRN BY:	BRH
CUSTOMER DIMS	09-11-06	CHK'D BY:	BRH
TITLE:	10 POINT BUS STRIP WITH 2-1/4" POSTS		SCALE:
MATERIAL:	GLASS FILLED NYLON		PART NO:
COLOR:	BLACK	DRG CLASS	REV G
			771025N0N14