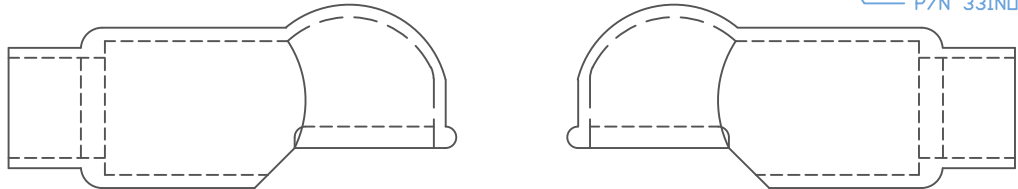
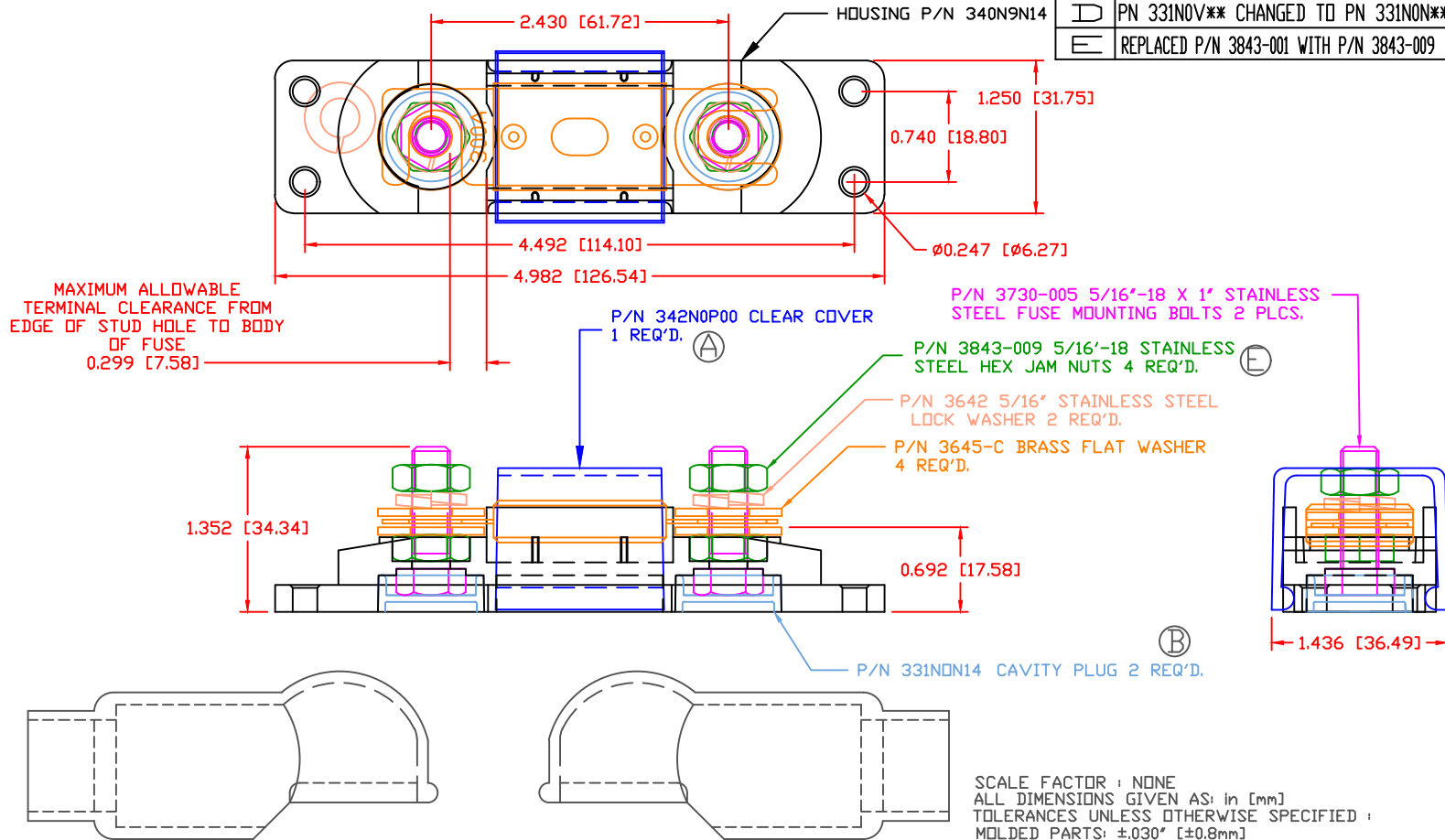


THE INFORMATION CONTAINED IN THIS DRAWING IS THE SOLE PROPERTY OF VTE INCORPORATED. ANY REPRODUCTION IN PART OR WHOLE WITHOUT THE WRITTEN PERMISSION OF VTE INCORPORATED IS PROHIBITED. VTE MAKES NO WARRANTY, EXPRESSED OR IMPLIED, AS TO THE SUITABILITY OF A PRODUCT FOR ANY INTENDED USE. THE CUSTOMER SHALL BEAR THE SOLE RESPONSIBILITY OF DETERMINING THE SUITABILITY OF ANY VTE PRODUCT FOR ITS END USE.

LTR.	REVISIONS	DATE	INT
A	342NOV00 WAS 341NOV00	03-13-07	BRH
B	ADDED MAXIMUM AMPERAGE NOTE	06-24-13	BRH
C	342NOP00 WAS 342NOV00	07-30-15	BRH
D	PN 331NOV** CHANGED TO PN 331NON**	08-05-16	MDL
E	REPLACED P/N 3843-001 WITH P/N 3843-009	01-16-17	RAS




FUSE NOT INCLUDED
ASSEMBLY INCLUDES: 2-487N9V14 INSULATORS

MATERIAL PART NO: 1111210514UL
MATERIAL: GLASS FILLED NYLON
VENDOR PART NO: HYLON N2015 HL BK
SPECIFIC GRAVITY: 1.23
MELTING TEMP: 515 F [268 C]
U.L. RATING: UL 94 HB

MAXIMUM RECOMMENDED AMPERAGE: 300 AMPS @ 12 VDC

SCALE FACTOR: NONE
ALL DIMENSIONS GIVEN AS: in [mm]
TOLERANCES UNLESS OTHERWISE SPECIFIED:
MOLDED PARTS: ±0.30" [±0.8mm]
HARDWARE ITEMS: ±0.10" [±0.25mm]

		VTE Incorporated 5437 Robinson Road, P.O. Box 790 Pellston, Michigan 49769 Telephone: 1-800-527-9256, 231-539-8000 FAX: 231-539-0914	
		REF:	DATE: 11-10-04
TITLE: ANL TYPE FUSE HOLDER 4/0 CABLE			SCALE:
MATERIAL:		PART NO.	
COLOR: BLACK	DRG CLASS: REV E	ANB740NON14	