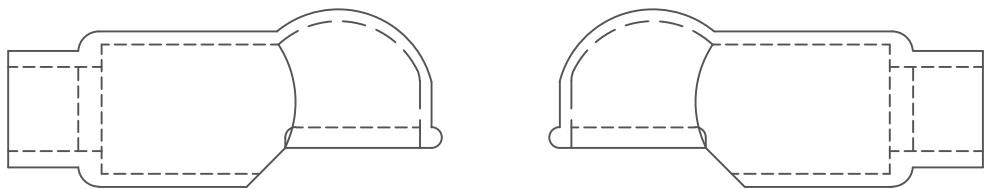
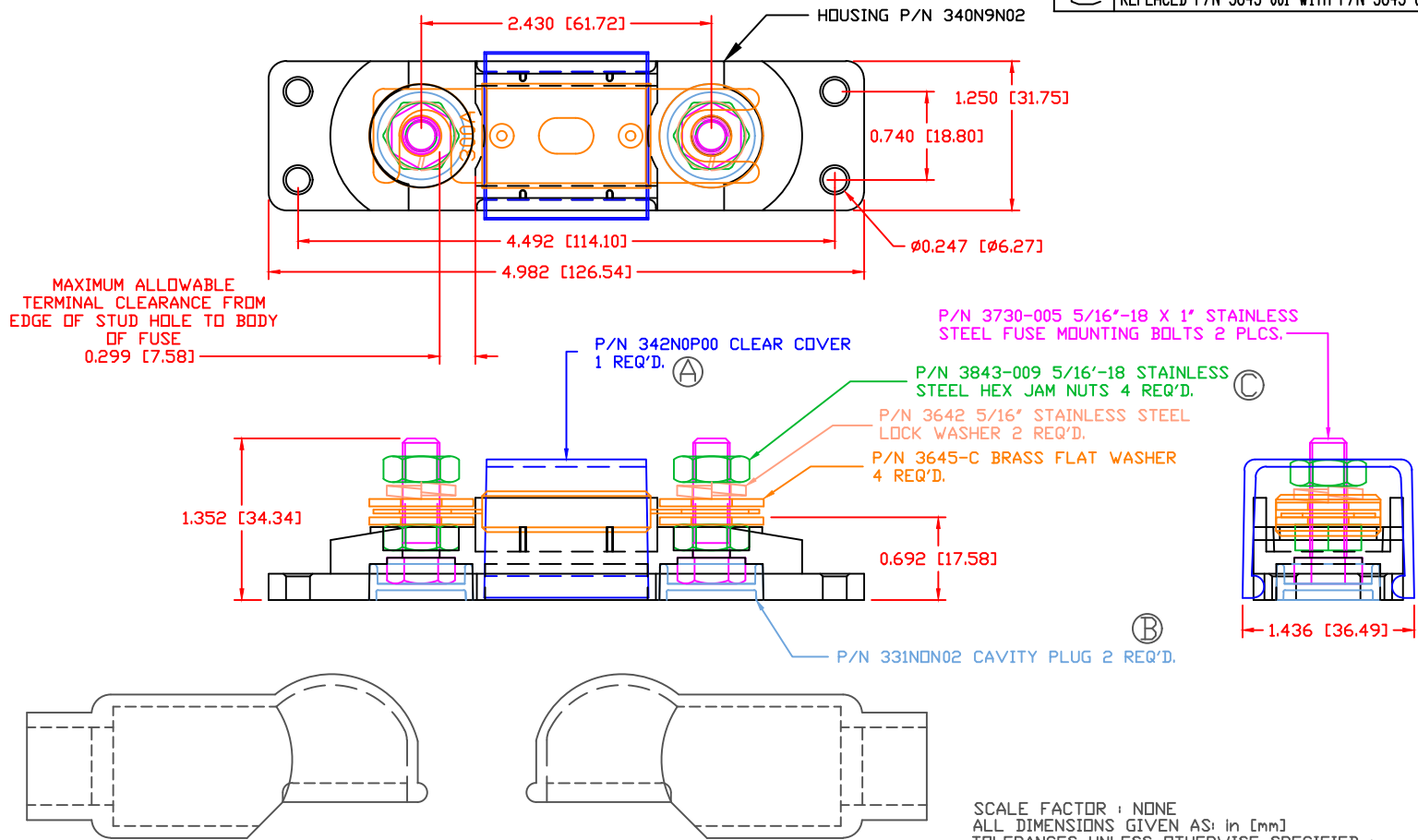


THE INFORMATION CONTAINED IN THIS DRAWING IS THE SOLE PROPERTY OF VTE INCORPORATED. ANY REPRODUCTION IN PART OR WHOLE WITHOUT THE WRITTEN PERMISSION OF VTE INCORPORATED IS PROHIBITED. VTE MAKES NO WARRANTY, EXPRESSED OR IMPLIED, AS TO THE SUITABILITY OF A PRODUCT FOR ANY INTENDED USE. THE CUSTOMER SHALL BEAR THE SOLE RESPONSIBILITY OF DETERMINING THE SUITABILITY OF ANY VTE PRODUCT FOR ITS END USE.

| LTR. | REVISIONS | DATE | INT. |
|------|---|----------|------|
| A | 342N0P00 WAS 342N0V00 | 07-30-15 | BRH |
| B | PN 331NOV** CHANGED TO PN 331NON** | 08-05-16 | MDL |
| C | REPLACED P/N 3843-001 WITH P/N 3843-009 | 01-16-17 | RAS |



SCALE FACTOR : NONE
 ALL DIMENSIONS GIVEN AS: in [mm]
 TOLERANCES UNLESS OTHERWISE SPECIFIED :
 MOLDED PARTS: ±0.30" [±0.8mm]
 HARDWARE ITEMS: ±0.10" [±0.25mm]

FUSE NOT INCLUDED
 ASSEMBLY INCLUDES:

2-487N6V02 INSULATORS

MATERIAL PART NO:
 MATERIAL:
 VENDOR PART NO:
 SPECIFIC GRAVITY:
 MELTING TEMP:
 U.L. RATING:

7111210502
 GLASS FILLED NYLON
 NYLON N2015 HL NAT
 1.23
 515 F [268 C]
 UL 94 HB

MAXIMUM RECOMMENDED AMPERAGE: 300 AMPS @ 12 VDC

VTE Incorporated
 5437 Robinson Road, P.O. Box 790
 Pellston, Michigan 49769
 Telephone: 1-800-527-9256, 231-539-8000
 FAX: 231-539-0914

| | | | |
|-----------------------------|------------------|---------------|---------|
| REF: | DATE: 3-26-07 | DRN BY: BRH | WEIGHT: |
| | | CHK'D BY: BRH | |
| TITLE: ANL TYPE FUSE HOLDER | | | SCALE: |
| MATERIAL: | | PART NO. | |
| COLOR: RED | DRG CLASS: REV C | ANB740N7N02 | |