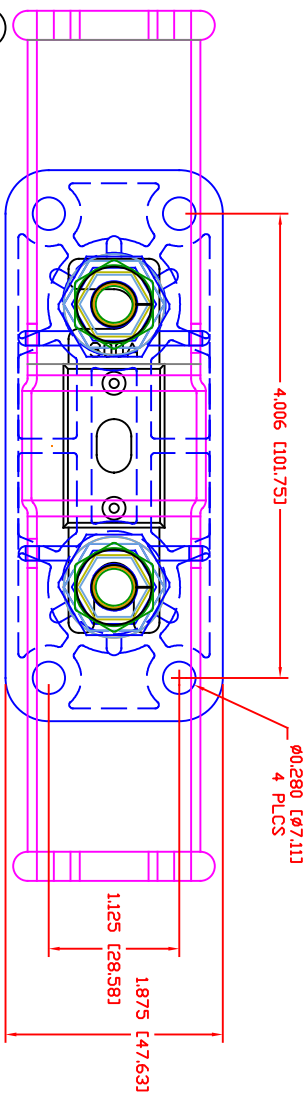
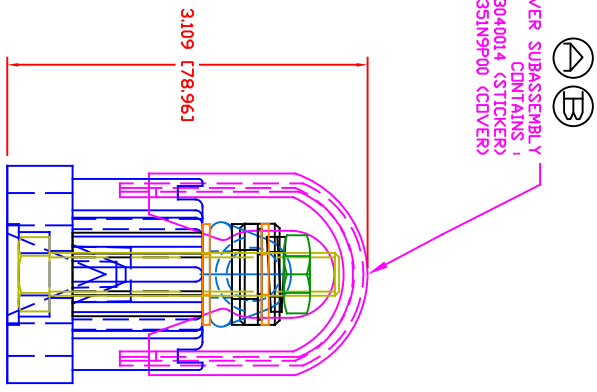
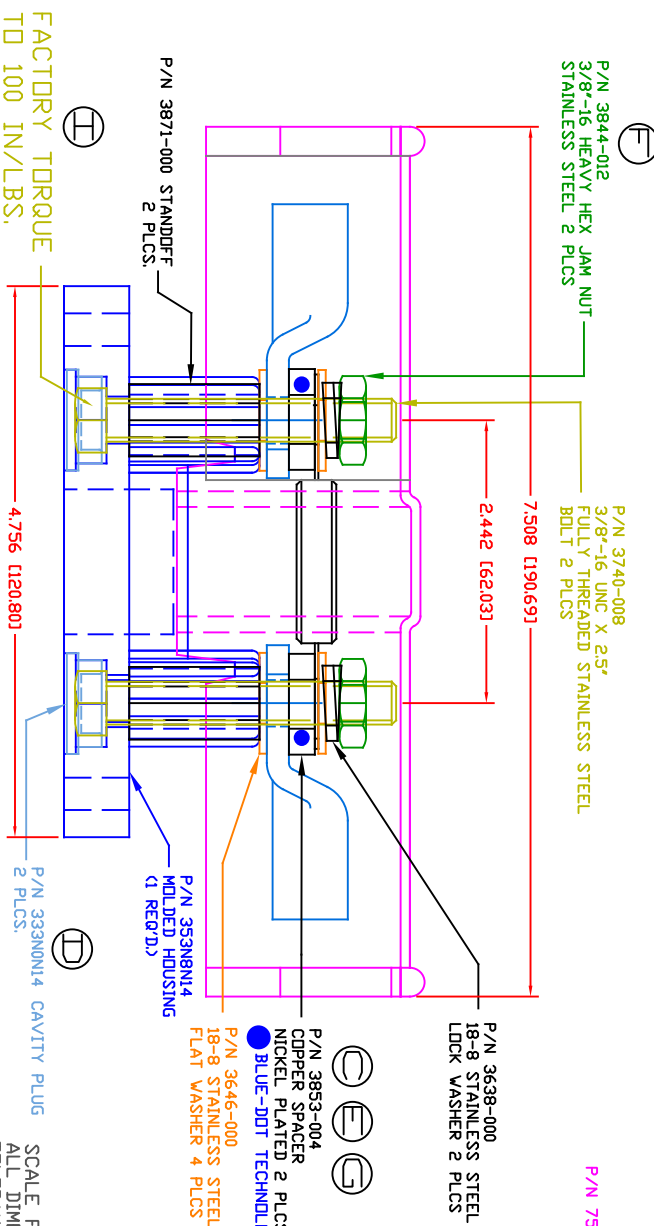


THE INFORMATION CONTAINED IN THIS DRAWING IS THE SOLE PROPERTY OF VTE INCORPORATED. ANY REPRODUCTION IN PART OR WHILE WITHOUT THE WRITTEN PERMISSION OF VTE INCORPORATED IS PROHIBITED. VTE MAKES NO WARRANTY, EXPRESSED OR IMPLIED, AS TO THE SUITABILITY OF A PRODUCT FOR ANY INTENDED USE. THE CUSTOMER SHALL BEAR THE SOLE RESPONSIBILITY OF DETERMINING THE SUITABILITY OF ANY VTE PRODUCT FOR ITS END USE.

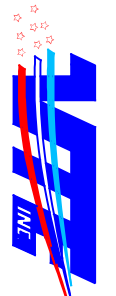


| LTR. | REVISIONS | DATE | INT. |
|------|---|----------|------|
| A | 751N9V00 WAS 351N9V00 | 04-23-13 | BRH |
| B | 751N9P00 WAS 751N9V00 | 07-30-15 | BRH |
| C | 3853-004 WAS 3853-212 | 08-02-16 | RAS |
| D | 3338N0N* WAS 3338N0V* | 08-22-16 | MDL |
| E | 3853-212 WAS 3853-004 | 11-04-16 | JMM |
| F | 3844-012 WAS 3844-003 | 11-04-16 | JMM |
| G | 3853-004 WAS 3853-012 | 05-30-17 | JMM |
| H | ADDED ADDITIONAL INFORMATION FOR PROPER USE | 2-19-18 | RAS |
| I | ADDED FACTORY TORQUE SPEC TO 3740-008 | 7-09-24 | RAS |



SCALE FACTOR : NONE
ALL DIMENSIONS GIVEN AS: in [mm]
TOLERANCES UNLESS OTHERWISE SPECIFIED :
MOLDED PARTS: ±.030" [±0.8mm]
HARDWARE ITEMS: ±.010" [±0.25mm]

MAXIMUM AMPERAGE: 750 AMPS @ 12VDC
MAXIMUM VOLTAGE: 32VDC
MAXIMUM RECOMMENDED FASTENER TORQUE: 180 IN./LBS. [20.3 Nm]
STAINLESS HEAVY HEX JAM NUT:
MATERIAL: 304 STAINLESS STEEL
MATERIAL: 304 STAINLESS STEEL
VENDOR PART NO: 304-16-001
SPECIFIC GRAVITY: 7.8
MELTING TEMP: 2550 F [1400 C]
U.L. RATING: 750A
COVER MATERIAL: POLYPROPYLENE
INCLUDES P-16808110001 BLUE DOT MULTI LABEL, 1 PER CONTAINER
FUSE AND LUG TERMINALS ARE NOT INCLUDED, (SHOWN FOR REFERENCE ONLY)



VTE Incorporated
5437 Robinson Road, P.O. Box 790
Pellston, Michigan 49769
Telephone: 1-800-527-9256, 231-539-8000
FAX: 231-539-0914

| | | | | |
|---------------|--------------------------------------|-----------|-------|-------------|
| REF: | DATE: | DRN BY: | BRH | WEIGHT: |
| CUSTOMER DIMS | 04-20-07 | CHK'D BY: | BRH | |
| TITLE: | FUSE HOLDER, HIGH AMP ANL 3/8" STUDS | | | |
| MATERIAL: | GLASS FILLED NYLON | | | PART NO. |
| COLOR: | BLACK | DRG | CLASS | REV I |
| | | | | ANB753N8N14 |