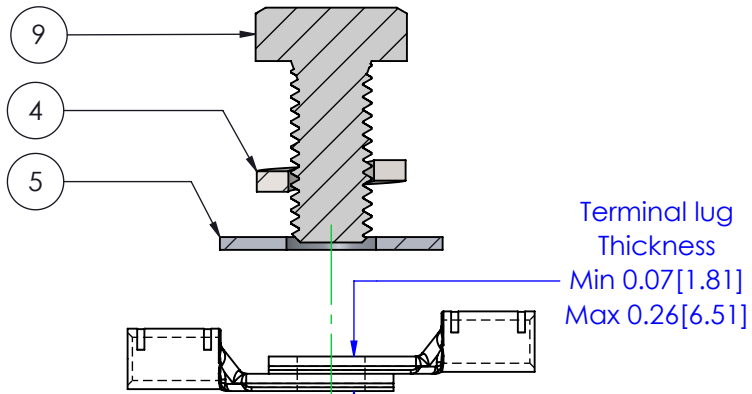
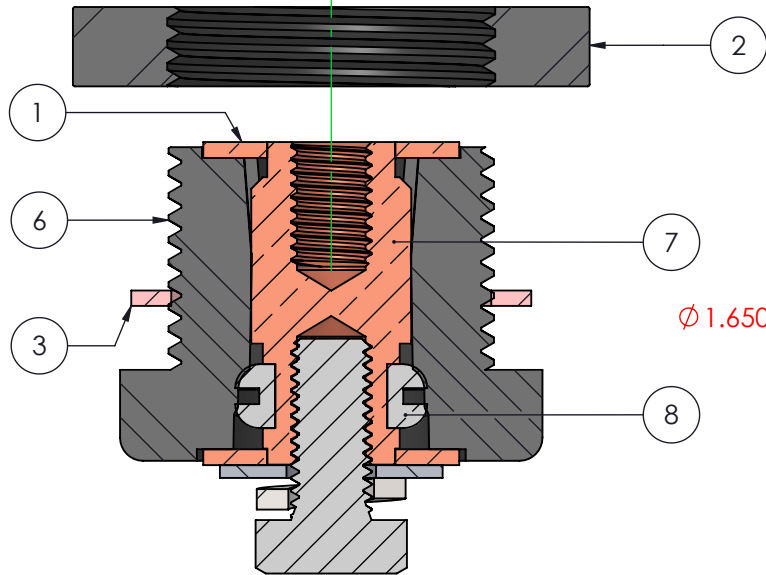
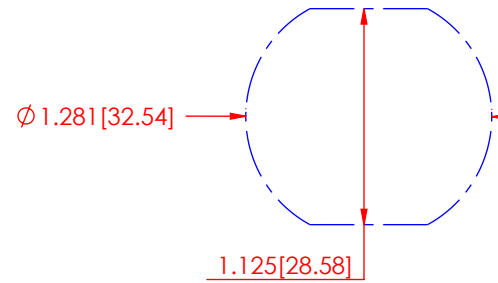


| REVISIONS |                           |           |          |
|-----------|---------------------------|-----------|----------|
| REV.      | DESCRIPTION               | DATE      | APPROVED |
| A         | Updated Electrical Values | 3/30/2023 | RAS      |

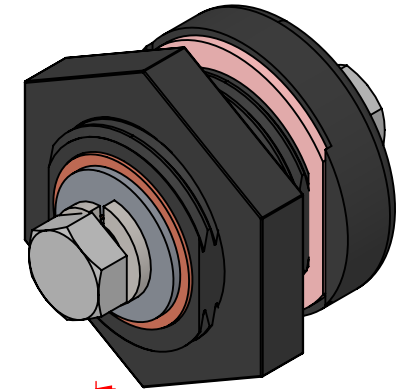
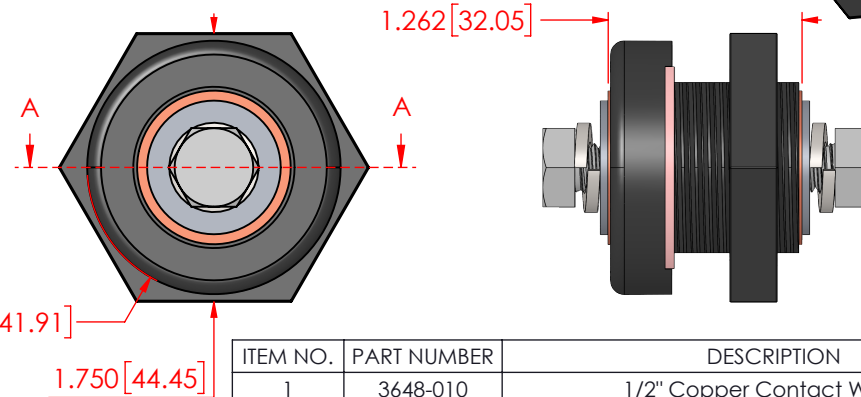


Terminal lug  
Thickness  
Min 0.07[1.81]  
Max 0.26[6.51]

PANEL CUT-OUT



SECTION A-A



| ITEM NO. | PART NUMBER | DESCRIPTION  | QTY. |
|----------|-------------|--|------|
| 1        | 3648-010    | 1/2" Copper Contact Washer                         | 2    |
| 2        | 359N0N14    | Glass Filled Nylon Locking Nut (Black)             | 1    |
| 3        | 3960-005    | Norseal Red Silicone Gasket                        | 1    |
| 4        | 3638-002    | M8 18-8 Stainless Steel Lock Washer                | 2    |
| 5        | 3645-000    | 5/16" 18-8 Stainless Steel Flat Washer             | 2    |
| 6        | 362N0N14    | Nylon Power Bushing Housing (Black)                | 1    |
| 7        | 3731-004    | 8mm x 1.25 18-8 Stainless Steel Hex Bolt 18mm Long | 2    |
| 8        | 3865-000    | 8mm x 1.25 Threaded Copper Core                    | 1    |
| 9        | 3962-000    | SBR Rubber Grommet                                 | 1    |

|                          |      |      |      |      |
|--------------------------|------|------|------|------|
| CABLE TEMP RATING :      | 60c  | 90c  | 105c | 125c |
| CURRENT RATING @ 12vdc : | 275A | 380A | 440A | 490A |
| TEMPORARY MAX @ 12vdc :  | 305A | 415A | 475A | 535A |

MAXIMUM VOLTAGE : 48 VDC

MATERIAL PART NO: 1111210514UL  
MATERIAL: GLASS FILLED NYLON  
VENDOR PART NO: HYLON N2015 HL BK

MAX M8 FASTENER TORQUE: 144 IN./LBS. [16.27 Nm]  
MAX NYLON NUT TORQUE: 120 IN./LBS. [13.56 Nm]

Assembly Weight : 0.24 Lbs. [108.8g]

Assembly Color : Black

ALL DIMENSIONS GIVEN AS : INCH [METRIC]  
TOLERANCES UNLESS OTHERWISE SPECIFIED :  
MOLDED PRODUCTS : ±.030" / ±0.8mm  
HARDWARE PRODUCTS : ±.010" / ±0.25mm

PRINTED COPIES ARE NOT CONTROLLED

**PROPRIETARY AND CONFIDENTIAL**

THE INFORMATION CONTAINED IN THIS DRAWING IS THE SOLE PROPERTY OF VTE INCORPORATED. ANY REPRODUCTION IN PART OR AS A WHOLE WITHOUT THE WRITTEN PERMISSION OF VTE INCORPORATED PROHIBITED.



**VTE INCORPORATED**

5437 Robinson Road, P.O. Box 790  
Pellston, Michigan 49769 USA  
Telephone : 1-800-527-9256, 231-539-8000  
Fax : 231-539-0914, Efax : 231-344-5914

|      |          |                      |            |  |
|------|----------|----------------------|------------|--|
| REV  | <b>A</b> | NAME                 | DATE       | TITLE:   |
| SIZE | <b>A</b> | DRAWN BY:            | RAS 3-9-23 | M8 Waterproof Power Bushing with 18mm Long Bolts |
|      |          | CHECKED BY:          | PJK 3-9-23 | DWG. NO.   |
|      |          | DO NOT SCALE DRAWING |            | <b>ICB088N14</b>                                 |