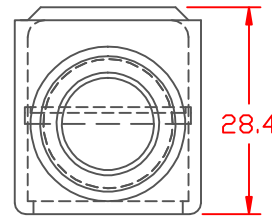
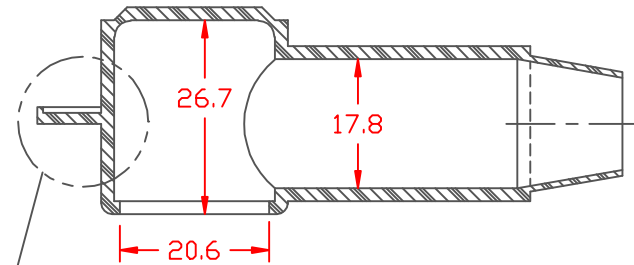


PROPRIETARY RIGHTS ARE CLAIMED FOR THE MATERIAL DISCLOSED IN THIS DRAWING.

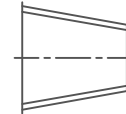
TYP. WALL THICKNESS = 1.8

LTR.	REVISIONS	DATE
✳	*****	00-00-98

SEAL OPTIONS  
SEAL THICKNESS = .8



NO. 1  
Wire Gages  
18 - 10

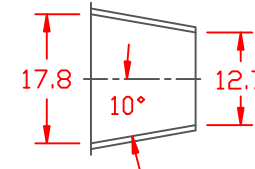


NO. 2  
Cable Gages  
8 - 2

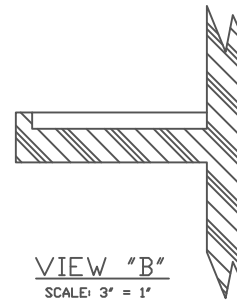
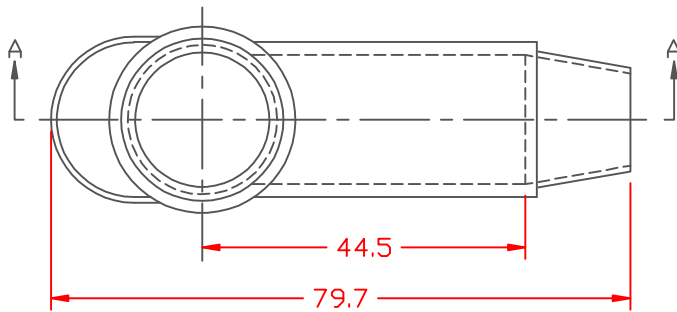
SEE VIEW "B"

SECTION A-A

SEAL NO. 3 SHOWN



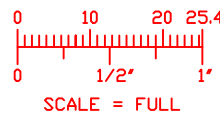
NO. 3  
Cable Gages  
2 - 2/0




TOLERANCE UNLESS OTHERWISE SPECIFIED: ±.030"/±0.8mm  
RADIAL DIAMETERS TO BE MEASURED OVER MANDRELS,  
RING GAGES OR PIN GAGES OF SUITABLE SIZE

VTE Material Part No: 1101650102  
Material: RED PVC  
Material Part No: 9812-65-RED683  
Max. Operating Temp: 105 C  
Shore Durometer: "A" 10 SEC. 67/62  
Specific Gravity: 1.34  
Ult. Elongation %: 475  
Brittle Temp: -44 C  
Tensile Strength PSI: 1547 PSI  
Dielectric Strength, v./ml: 540  
U.L. Rating: 94 V2  
MEETS: FMVSS.302

1101650102  
RED PVC  
9812-65-RED683  
105 C  
"A" 10 SEC. 67/62  
1.34  
475  
-44 C  
1547 PSI  
540  
94 V2  
FMVSS.302



		<b>VTE Incorporated</b> 5437 Robinson Road, P.O. Box 790 Pellston, Michigan 49769 Telephone: 1-800-527-9256, 231-539-8000 FAX: 231-539-0914	
		REF:	DATE: 3-24-98
TITLE: TERMINAL INSULATOR CAP		PART NO. 222E3V02	
MATERIAL:	COLOR:	DRG CLASS:	