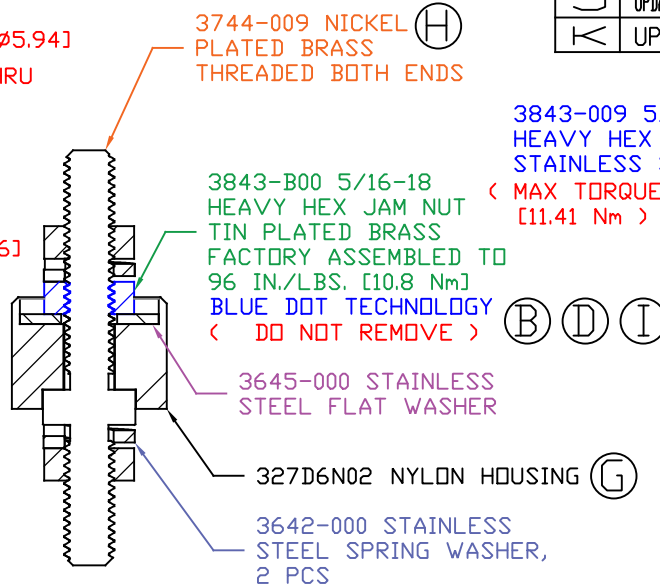
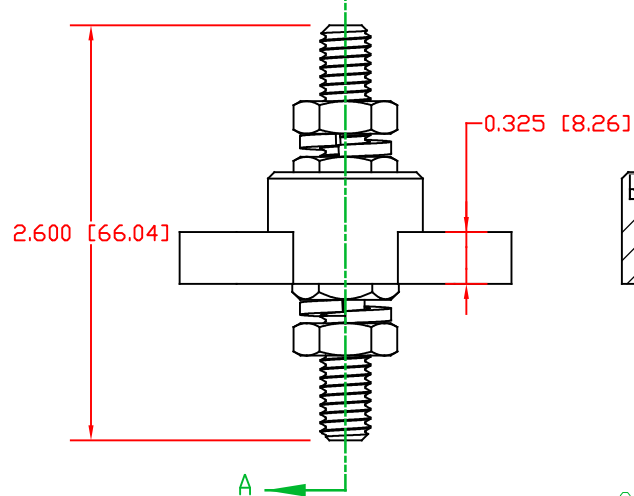
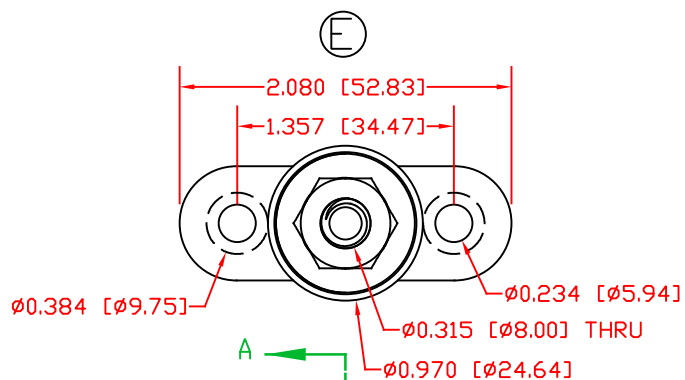
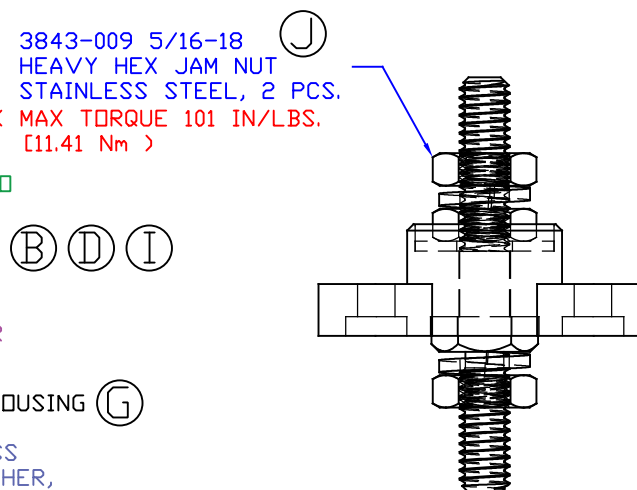


THE INFORMATION CONTAINED IN THIS DRAWING IS THE SOLE PROPERTY OF VTE INCORPORATED. ANY REPRODUCTION IN PART OR WHOLE WITHOUT THE WRITTEN PERMISSION OF VTE INCORPORATED IS PROHIBITED. VTE MAKES NO WARRANTY, EXPRESSED OR IMPLIED, AS TO THE SUITABILITY OF A PRODUCT FOR ANY INTENDED USE. THE CUSTOMER SHALL BEAR THE SOLE RESPONSIBILITY OF DETERMINING THE SUITABILITY OF ANY VTE PRODUCT FOR ITS END USE.



SECTION A-A



| LTR. | REVISIONS | DATE | INT. |
|------|---|----------|------|
| A | REDRAWN AND REDESIGNED | 12-28-07 | BRH |
| B | ADDED FACTORY TORQUE NOTE | 2-14-12 | BRH |
| C | REPLACED P/N 3843-001 WITH P/N 3843-009 | 1-16-17 | RAS |
| D | 3843-B00 WAS 3843-000 | 6-13-17 | JMM |
| E | UPDATED AND ADDED DIMENSIONS FOR MOUNTING | 7-31-17 | RAS |
| F | ADDED ELECTRICAL VALUES | 10-25-18 | RAS |
| G | UPDATED BASE PART NUMBER FROM 327D3 | 8-12-21 | RAS |
| H | UPDATED CORE PART NUMBER FROM 3744-000 | 8-12-21 | RAS |
| I | UPDATED TORQUE VALUE FROM 132 IN./LBS. [14.91 Nm] | 8-12-21 | RAS |
| J | UPDATED TORQUE VALUE FROM 112 IN./LBS. [12.65 Nm] | 8-12-21 | RAS |
| K | UPDATED ELECTRICAL VALUES | 10-18-22 | RAS |


SCALE FACTOR: NONE
ALL DIMENSIONS GIVEN AS: in [mm]
TOLERANCES UNLESS OTHERWISE SPECIFIED:
MOLDED PARTS: ± 0.030 " [± 0.8 mm]
HARDWARE ITEMS: ± 0.010 " [± 0.25 mm]

INCLUDES P-16808110001 BLUE DOT MULTI LABEL, 1 PER CONTAINER

MATERIAL PART NO:
MATERIAL:
VENDOR PART NO:
SPECIFIC GRAVITY:
MELTING TEMP:
U.L. RATING:

7111210502
GLASS FILLED NYLON
NYLON N2015 HL NAT
1.23
515 F [268 C]
UL 94 HB

CURRENT CARRYING CAPACITY: 325 AMPS AT 12 VDC

| | | | |
|---|-----------------|---|---------------|
|  | | VTE Incorporated 5437 Robinson Road, P.O. Box 790 Pellston, Michigan 49769 Telephone: 1-800-527-9256, 231-539-8000 FAX: 231-539-0914 | |
| | | REF: CUSTOMER DIMS | DATE: 8-23-21 |
| TITLE: PASSTHROUGH JUNCTION STUD | | | |
| MATERIAL: GLASS FILLED NYLON | | PART NO. | |
| COLOR: RED | DRG CLASS REV K | 77231N02 | |